

REDEYE



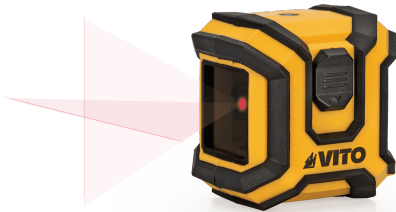
SELF-LEVELLING RED CROSS-LINE LASER LEVEL - 10M

VILALC10

Self Levelling Laser Cross Lines with a rated power of 3V (2 x 1, 5 V LR03), has a laser power Class 2 < 1mW, with a laser line width of 100 lux, 3mm/5m with a radius diameter of 10 metres, performing its leveling without effort.

Key features

- > - Cross Line Projection.
- > - Automatic Levelling to 3° in 5 seconds.
- > - Leveling Unit Locking
- > - Built-in 1/4" Fixing Thread
- > - Laser Wavelength: 635 nm.
- > - Range Diameter: 10 meters - Autonomy: > 15 hours.



Specifications

Automatic self-levelling	Yes
Integrated 1/4" locking thread	Sim
Laser line width	100 lux, 3 mm/5 m
Laser output power	Classe 2 < 1 mW
Laser wavelength	635 nm
Leveling unit locking	Yes
Line projection	Yes
Measurement accuracy	± 0,5 mm/m
Working Range	10 m
Autonomy	> 15 horas
Dimensions	65 x 55 x 68 mm
Product weight	160 g
Weight with packaging	325 g
Operating temperature	0 - 40° C
Packaging dimensions	120 x 62 x 240 mm
Rated power	3 V (2 x 1,5 V LR03)